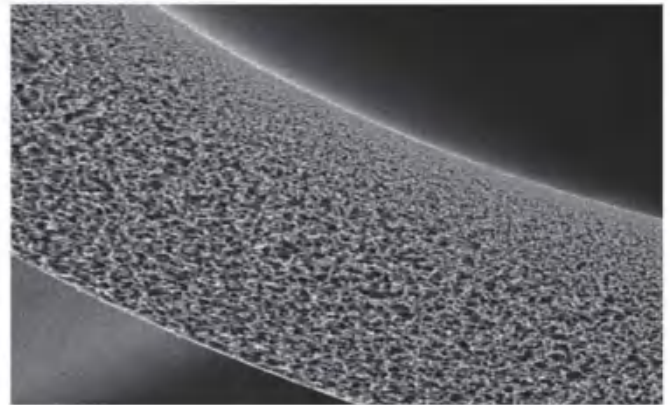


Low-Flux Hollow Fiber Dialyzer PC Series

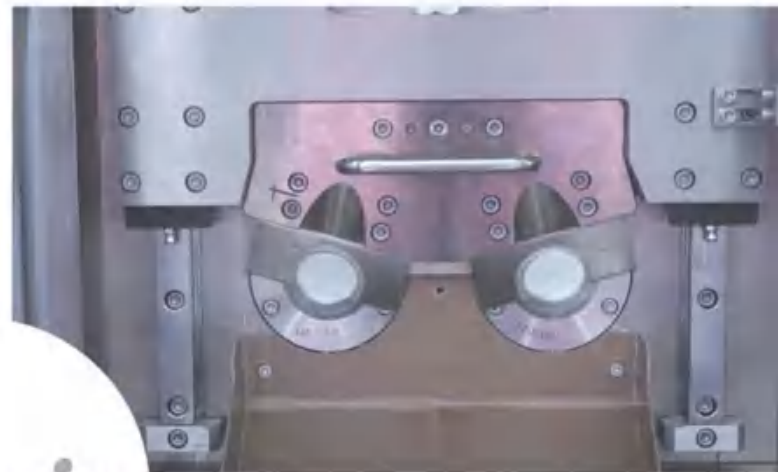
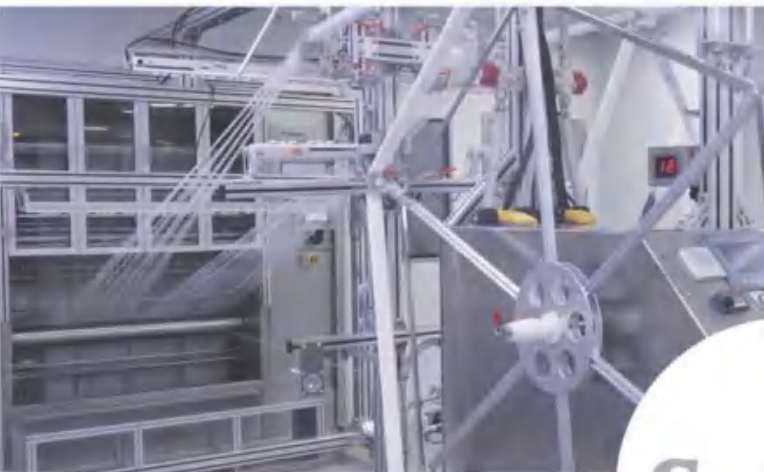


Features

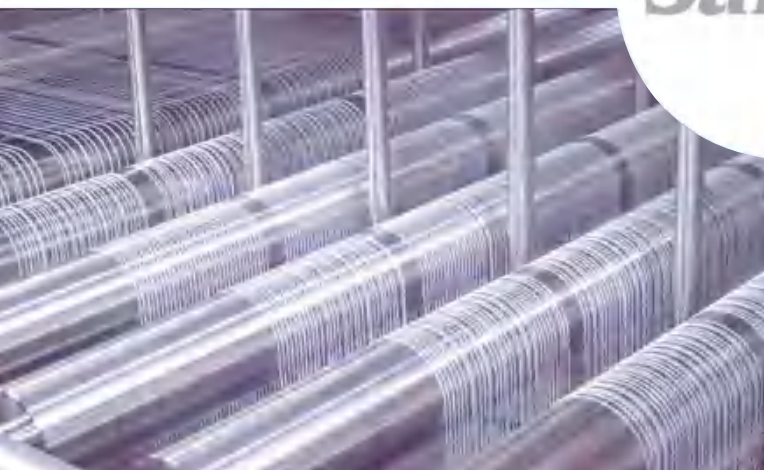
- Excellent biocompatibility.
- Good anticoagulant function.
- Effective screening of endotoxin and pyrogen in dialysate.
- Dialyzer membrane imported from Germany with P.E.T proprietary technology.



Fully automatic production workshop.



Sansin





Specification	SM120L	SM130L	SM140L	SM150L	SM160L	SM170L	SM180L	SM190L	SM200L	
Effective membrane area(m ²)	1.2	1.3	1.4	1.5	1.6	1.7	1.8	1.9	2.0	
Chamber volumn (mL)	74	77	80	88	96	101	106	114	116	
Pressure drop dialysate (mmHg)	78	72	68	64	60	56	53	50	47	
Q _D =500mL/min										
ultrafiltrate coefficient (mL/h·mmHg)	12	13	14	15	16	17	18	19	20	
Q _B =200mL/min; TMP=100mmHg										
Maximum blood flow (mL/min)					400					
Test condition	Q _B =200mL/min; Q _D =500mL/min; Q _F =10mL/min									
Clearance	Urea (mL/min)	175	176	177	181	186	190	191	192	193
	Creatinine (mL/min)	159	160	161	169	178	181	183	184	185
	Phosphate (mL/min)	150	152	155	157	165	166	167	168	170
	Vitamine B ₁₂ (mL/min)	95	100	105	106	107	112	115	117	120
Test condition	Q _B =300mL/min; Q _D =500mL/min; Q _F =10mL/min									
Clearance	Urea (mL/min)	225	227	229	236	243	247	251	253	256
	Creatinine (mL/min)	211	212	214	217	220	225	231	234	238
	Phosphate (mL/min)	200	206	213	216	220	225	230	235	240
	Vitamine B ₁₂ (mL/min)	100	106	112	114	116	120	125	130	135
Test condition	Q _B =400mL/min; Q _D =500mL/min; Q _F =10mL/min									
Clearance	Urea (mL/min)	257	261	266	270	275	280	285	290	295
	Creatinine (mL/min)	219	225	229	238	248	252	257	261	266
	Phosphate (mL/min)	205	224	243	244	245	247	250	255	260
	Vitamine B ₁₂ (mL/min)	106	118	130	132	135	137	140	145	150

江西三鑫医疗科技股份有限公司

JIANGXI SANXIN MEDTEC CO.,LTD.

地址: 江西南昌小蓝经济技术开发区富山大道999号

Add: No.999 Fushan Road, Xiaolan Economic Development

Zone 330200 Nanchang, Jiangxi P.R. China

电话 (Tel) : 86-791-85950275 Fax: 86-791-85988819

邮箱 (E-mail) : sales@sanxin-med.com

网址 (Web) : www.sanxin-med.com

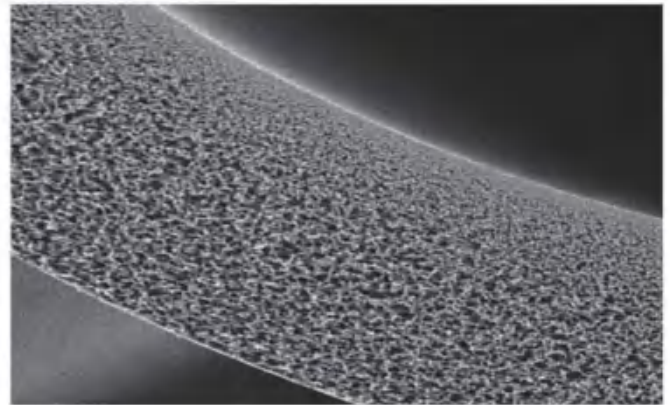


High-Flux Hollow Fiber Hemodialysis Dialyzer PC Series

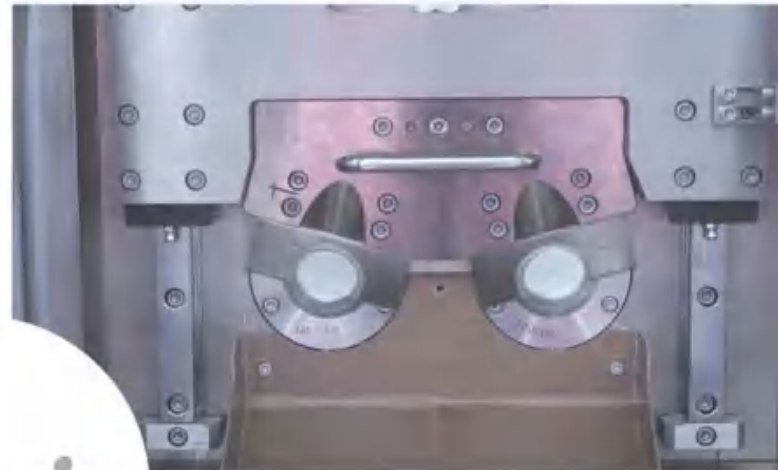
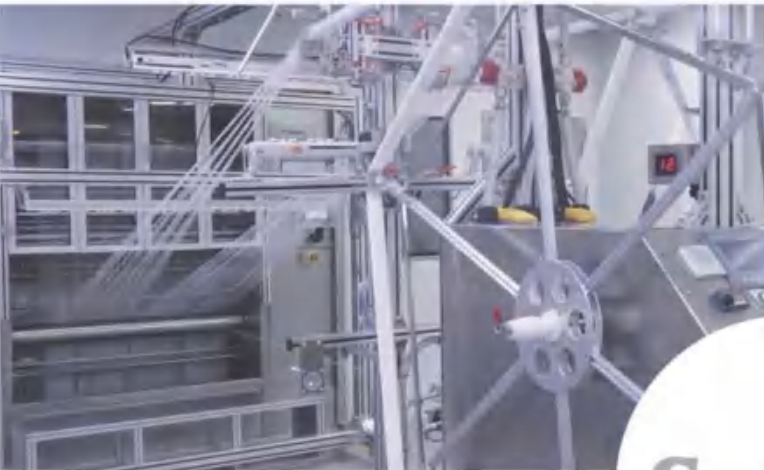


Features

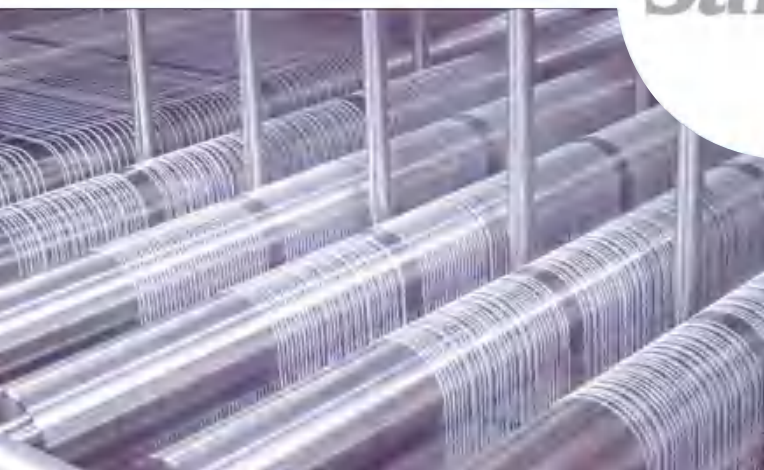
- Excellent biocompatibility.
- Good anticoagulant function.
- Effective screening of endotoxin and pyrogen in dialysate.
- Dialyzer membrane imported from Germany with P.E.T proprietary technology.



Fully automatic production workshop.

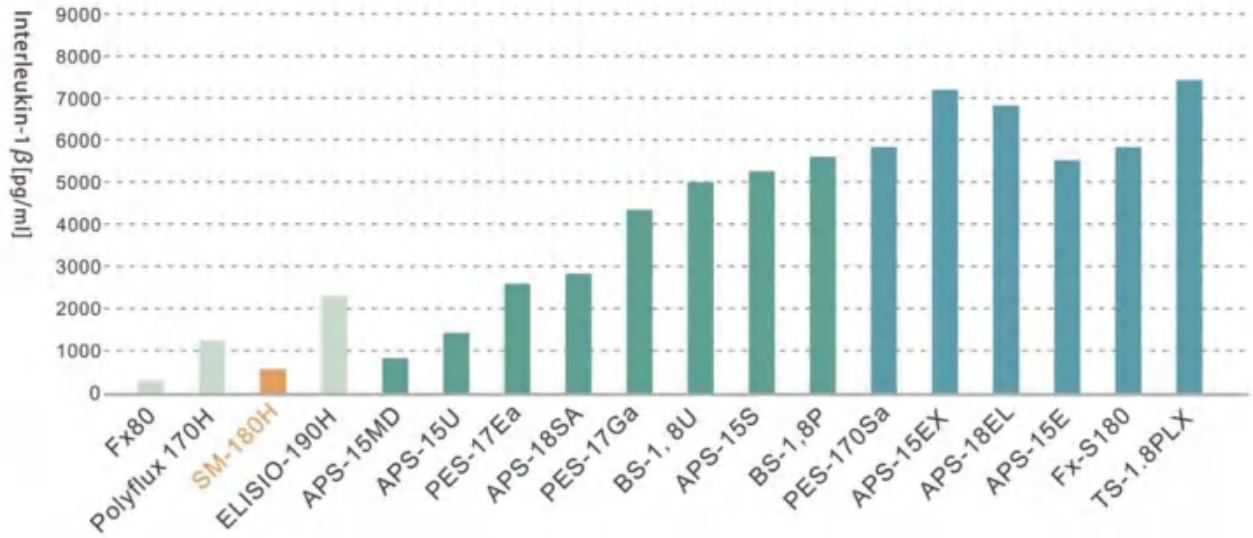


Sansin

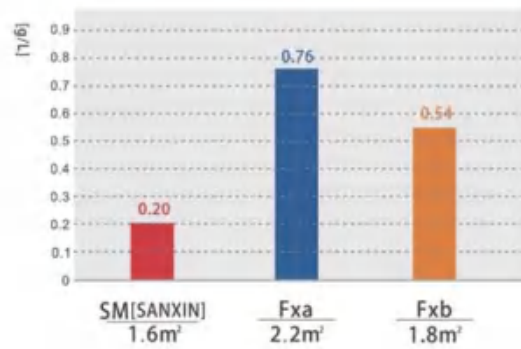




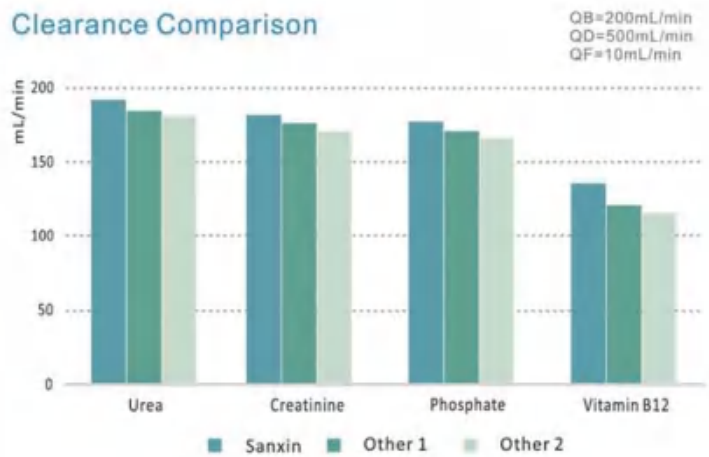
Heat source interception effect of high flux dialyzer with different permeability



Minimal protein loss



Clearance Comparison



- High efficiency of dispersion
- Good-exdotoxin interception capability
- Best biocompatibility



Specification	SM120H	SM130H	SM140H	SM150H	SM160H	SM170H	SM180H	SM190H	SM200H	SM210H
Effective membrane area(m ²)	1.2	1.3	1.4	1.5	1.6	1.7	1.8	1.9	2.0	2.1
Chamber volume (mL)	75	80	85	90	95	102	110	115	120	123
Pressure drop dialysate (mmHg)	78	72	68	64	60	56	53	50	47	44
Q _D =500mL/min										
ultrafiltrate coefficient (mL/h·mmHg)	44	47	50	55	60	62.5	65	67.5	70	71
Q _D =200mL/min; TMP=100mmHg										
Maximum blood flow (mL/min)	400									
Inulin	0.9*(1±10%)									
Sieving Coefficient	≥0.6									
β2-microglobulin	≥0.5									
Myoglobin	≥0.5									
Albumin	≤0.01									
Test condition	Q _B =200mL/min; Q _D =500mL/min; Q _F =10mL/min									
Urea (mL/min)	191	192	193	194	195	196	197	197	198	199
Creatinine (mL/min)	179	180	181	183	185	187	190	192	195	196
Phosphate (mL/min)	176	177	178	179	181	183	185	187	190	193
Vitamine B ₁₂ (mL/min)	130	132	135	140	155	160	165	170	175	176
Test condition	Q _B =300mL/min; Q _D =500mL/min; Q _F =10mL/min									
Urea (mL/min)	255	257	260	263	267	271	275	277	280	282
Creatinine (mL/min)	230	235	240	245	250	255	260	265	270	272
Phosphate (mL/min)	215	220	225	230	235	242	250	256	262	264
Vitamine B ₁₂ (mL/min)	135	142	150	160	175	185	195	201	208	208
Test condition	Q _B =400mL/min; Q _D =500mL/min; Q _F =10mL/min									
Urea (mL/min)	280	285	290	300	320	325	330	335	340	342
Creatinine (mL/min)	260	265	270	280	295	300	305	311	317	318
Phosphate (mL/min)	240	250	260	270	280	287	295	300	305	308
Vitamine B ₁₂ (mL/min)	150	155	160	170	190	195	200	206	212	234

江西三鑫医疗科技股份有限公司

JIANGXI SANXIN MEDTEC CO.,LTD.

地址: 江西南昌小蓝经济技术开发区富山大道999号

Add: No.999 Fushan Road, Xiaolan Economic Development Zone 330200 Nanchang, Jiangxi P.R. China

电话 (Tel) : 86-791-85950275 Fax: 86-791-85988819

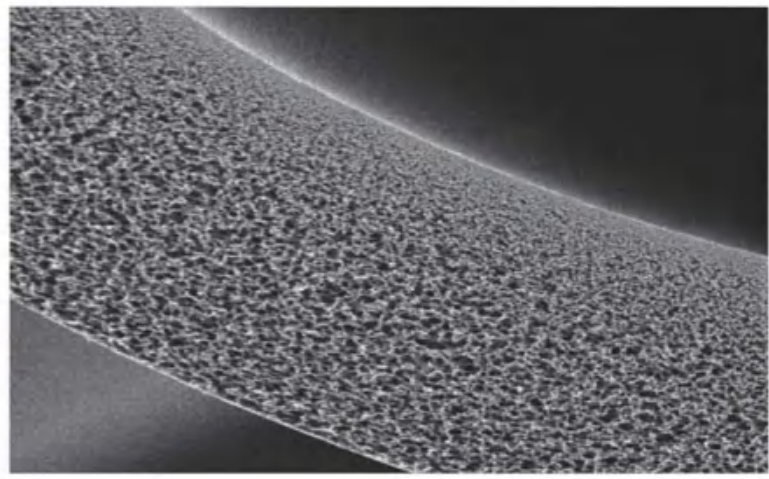
邮箱 (E-mail) : sales@sanxin-med.com

网址 (Web) : www.sanxin-med.com



Low-Flux Hollow Fiber Dialyzer PP Series





▶ Polypropylene(PP) material for Housing Perfectly matching with Polyethersulfone(PES) creates a new series of BPA free and DEHP free Dialyzer



Features:

- Minimizing potential risk for endocrine disruption to ESRD patient.
- Preventing the deterioration of renal function due to accumulation of BPA.
- Energy saving and lower CO2 emissions.
- Material saving and more economic delivery.



Specification	SM120L	SM130L	SM140L	SM150L	SM160L	SM170L	SM180L	SM190L	SM200L	
Effective membrane area(m ²)	1.2	1.3	1.4	1.5	1.6	1.7	1.8	1.9	2.0	
Chamber volumn (mL)	74	77	80	88	96	101	106	114	116	
Pressure drop dialysate (mmHg)	78	72	68	64	60	56	53	50	47	
Q _D =500mL/min										
ultrafiltrate coefficient (mL/h·mmHg)	12	13	14	15	16	17	18	19	20	
Q _B =200mL/min; TMP=100mmHg										
Maximum blood flow (mL/min)					400					
Test condition	Q _B =200mL/min; Q _D =500mL/min; Q _F =10mL/min									
Clearance	Urea (mL/min)	175	176	177	181	186	190	191	192	193
	Creatinine (mL/min)	159	160	161	169	178	181	183	184	185
	Phosphate (mL/min)	150	152	155	157	165	166	167	168	170
	Vitamine B ₁₂ (mL/min)	95	100	105	106	107	112	115	117	120
Test condition	Q _B =300mL/min; Q _D =500mL/min; Q _F =10mL/min									
Clearance	Urea (mL/min)	225	227	229	236	243	247	251	253	256
	Creatinine (mL/min)	211	212	214	217	220	225	231	234	238
	Phosphate (mL/min)	200	206	213	216	220	225	230	235	240
	Vitamine B ₁₂ (mL/min)	100	106	112	114	116	120	125	130	135
Test condition	Q _B =400mL/min; Q _D =500mL/min; Q _F =10mL/min									
Clearance	Urea (mL/min)	257	261	266	270	275	280	285	290	295
	Creatinine (mL/min)	219	225	229	238	248	252	257	261	266
	Phosphate (mL/min)	205	224	243	244	245	247	250	255	260
	Vitamine B ₁₂ (mL/min)	106	118	130	132	135	137	140	145	150

江西三鑫医疗科技股份有限公司

JIANGXI SANXIN MEDTEC CO.,LTD.

地址: 江西南昌小蓝经济技术开发区富山大道999号

Add: No.999 Fushan Road, Xiaolan Economic Development

Zone 330200 Nanchang, Jiangxi P.R. China

电话 (Tel) : 86-791-85950275 Fax: 86-791-85988819

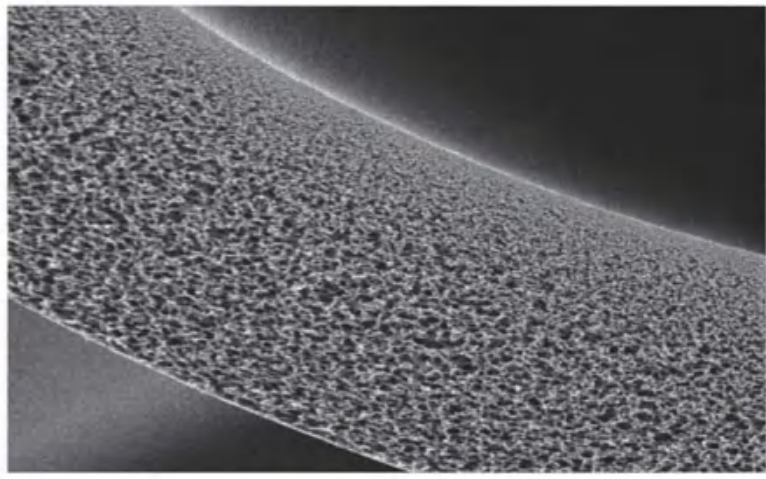
邮箱 (E-mail) : sales@sanxin-med.com

网址 (Web) : www.sanxin-med.com



High-Flux Hollow Fiber Hemodialysis Dialyzer PP Series





▶ Polypropylene(PP) material for Housing Perfectly matching with Polyethersulfone(PES) creates a new series of BPA free and DEHP free Dialyzer

Features:

- Minimizing potential risk for endocrine disruption to ESRD patient.
- Preventing the deterioration of renal function due to accumulation of BPA.
- Energy saving and lower CO2 emissions.
- Material saving and more economic delivery.



Specification	SM120H	SM130H	SM140H	SM150H	SM160H	SM170H	SM180H	SM190H	SM200H	SM210H	
Effective membrane area(m ²)	1.2	1.3	1.4	1.5	1.6	1.7	1.8	1.9	2.0	2.1	
Chamber volumn (mL)	75	80	85	90	95	102	110	115	120	123	
Pressure drop dialysate (mmHg)	78	72	68	64	60	56	53	50	47	44	
Q _D =500mL/min											
ultrafiltrate coefficient (mL/h·mmHg)											
Q _D =200mL/min; TMP=100mmHg	44	47	50	55	60	62.5	65	67.5	70	71	
Maximum blood flow (mL/min)						400					
Sieving Coefficient	Inulin					0.9*(1±10%)					
	β2-microglobulin					≥0.6					
	Myoglobin					≥0.5					
	Albumin					≤0.01					
Test condition						Q _B =200mL/min; Q _D =500mL/min; Q _F =10mL/min					
Clearance	Urea (mL/min)	191	192	193	194	195	196	197	197	198	199
	Creatinine (mL/min)	179	180	181	183	185	187	190	192	195	196
	Phosphate (mL/min)	176	177	178	179	181	183	185	187	190	193
	Vitamine B ₁₂ (mL/min)	130	132	135	140	155	160	165	170	175	176
Test condition						Q _B =300mL/min; Q _D =500mL/min; Q _F =10mL/min					
Clearance	Urea (mL/min)	255	257	260	263	267	271	275	277	280	282
	Creatinine (mL/min)	230	235	240	245	250	255	260	265	270	272
	Phosphate (mL/min)	215	220	225	230	235	242	250	256	262	264
	Vitamine B ₁₂ (mL/min)	135	142	150	160	175	185	195	201	208	208
Test condition						Q _B =400mL/min; Q _D =500mL/min; Q _F =10mL/min					
Clearance	Urea (mL/min)	280	285	290	300	320	325	330	335	340	342
	Creatinine (mL/min)	260	265	270	280	295	300	305	311	317	318
	Phosphate (mL/min)	240	250	260	270	280	287	295	300	305	308
	Vitamine B ₁₂ (mL/min)	150	155	160	170	190	195	200	206	212	234

Remarks:

Vitro testing under laboratory conditions different from the vivo,
the value variance should be estimated.

江西三鑫医疗科技股份有限公司

JIANGXI SANXIN MEDTEC CO.,LTD.

地址: 江西南昌小蓝经济技术开发区富山大道999号

Add: No.999 Fushan Road, Xiaolan Economic Development
Zone 330200 Nanchang, Jiangxi P.R. China

电话 (Tel) : 86-791-85950275 Fax: 86-791-85988819

邮箱 (E-mail) : sales@sanxin-med.com

网址 (Web) : www.sanxin-med.com

